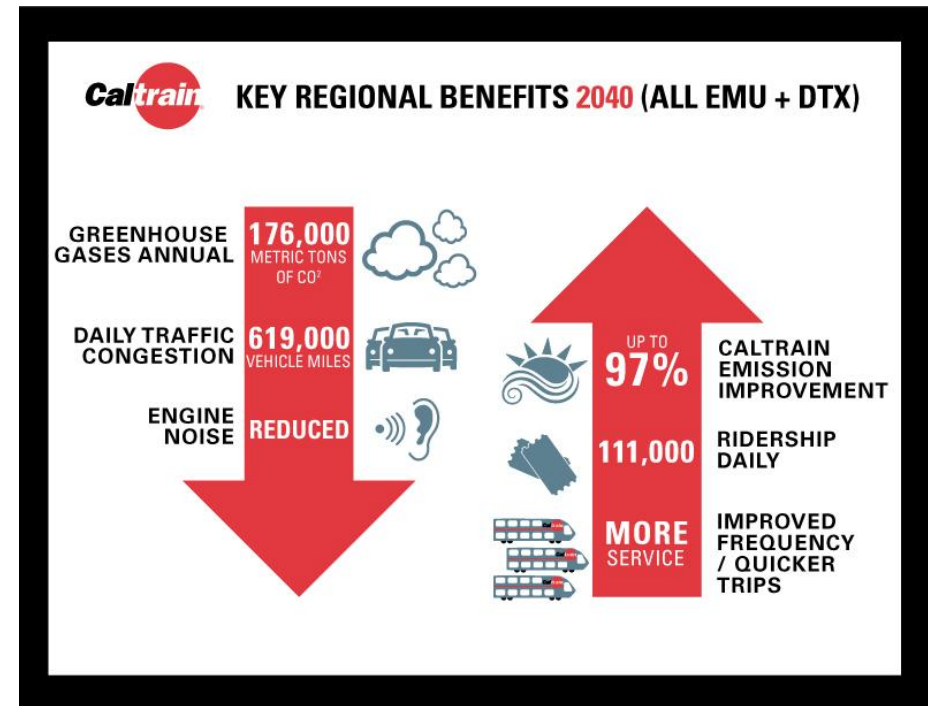


# The Future of Caltrain

## The Caltrain Modernization Program

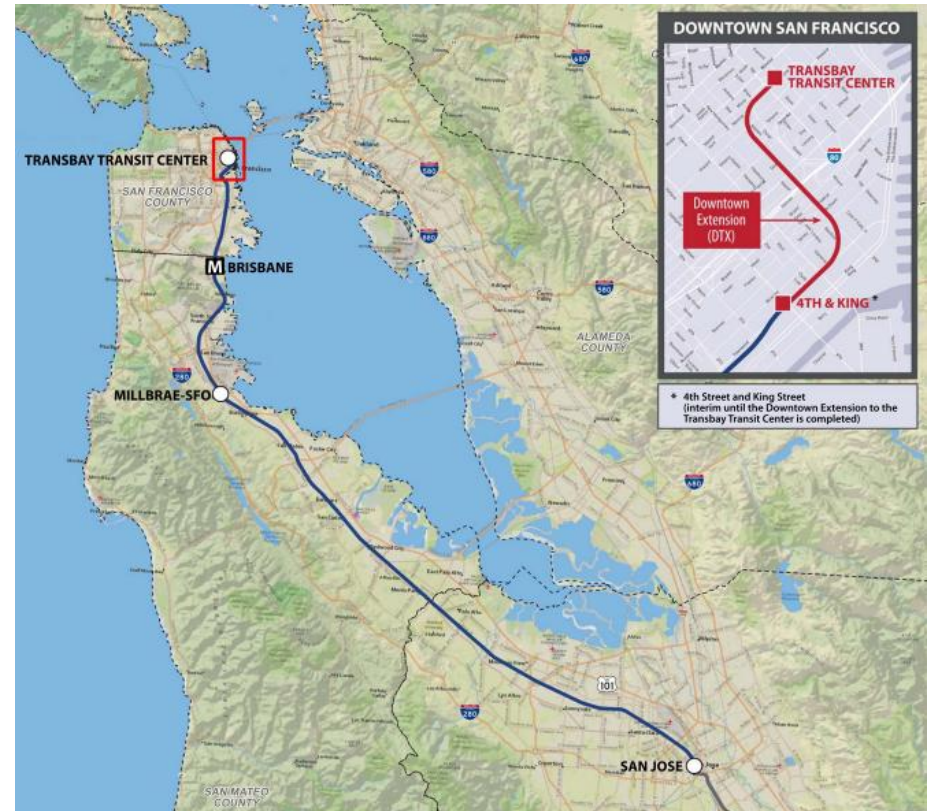
- ┆ The program will electrify and upgrade the performance, operating efficiency, capacity, safety, and reliability of Caltrain's commuter rail service
- ┆ Scheduled to be operational by 2020
- ┆ Allows Caltrain to operate quieter, cleaner, more frequent and/or faster train service to more riders, increasing ridership demand and alleviating local and regional traffic congestion
- ┆ Increases ridership and fare revenue, reduces operating costs because of the replacement of diesel fuel with electricity
- ┆ An advanced signal system is currently in construction
- ┆ The Caltrain electrification program will reduce an estimated 68,000 tons of carbon dioxide a year starting in 2020



# The Future of Caltrain

## Caltrain/High-Speed Rail Blended System

- ┆ California High-Speed Rail trains will primarily run on existing Caltrain tracks
- ┆ “Blended system” is a two-track system that avoids significant impacts to the surrounding communities
- ┆ Caltrain will continue to run, serving the same stations as today
- ┆ High-Speed Rail stations will include the San Francisco—Transbay Terminal (not currently accessible by Caltrain tracks), 4<sup>th</sup> and King (temporarily), Millbrae—SFO, and San Jose Diridon; it will not stop on the Peninsula other than Millbrae



**Brisbane** is the proposed location of a maintenance area.